

AHOY CLUB




ARCTIC
88M EXPLORER YACHT









Introducing ARCTIC — a true legend of the seas. Originally built as an ocean-going salvage tug, this 88-metre icon has been masterfully transformed into one of the world's most capable and luxurious explorer yachts. With an unmatched legacy of global expeditions and an unmistakable silhouette, ARCTIC offers the rare combination of heritage, strength, and refinement.

Now available for private charter, ARCTIC is not just a yacht — she's a story, a journey, and an invitation to explore the world's most remote and awe-inspiring destinations in complete comfort.





ARCTIC has circled the globe on some of the most ambitious private expeditions in yachting history. Her journey has taken her from the glaciers of Antarctica and fjords of Alaska, to the volcanic isles of the Galapagos, Cuba, and through the Panama Canal. She's cruised the crystal waters of French Polynesia, the Caribbean, and Milford Sound in New Zealand, and most recently explored the Adriatic and Mediterranean coastlines, including Croatia, Corfu, Sicily, and the Amalfi Coast.

In 2014 she earned a Guinness World Record for reaching the most southerly point ever navigated by a motor yacht — a title that cements her status as one of the most capable and iconic explorer yachts on the water.



OVERVIEW

BUILD/REBUILD

1994/2025

BUILDER

Schichau Unterweser AG

LENGTH

87.58m (287 ft)

BEAM

14.34m

DRAFT

7.2m

GROSS TONNAGE

2610

SPEED

Cruising: 12 knots

Top: 18 knots

SLEEPS

12

CABINS

7

CREW

28

TENDERS

7 + 2

FUEL CONSUMPTION

800 l/ph



WHY WE LOVE ARCTIC

- At 88m, ARCTIC is the largest explorer yacht available for charter in the world — globally recognised, uniquely capable, and built for world cruising without limits. Legendary heritage, reimaged: originally built as an ice-class salvage tug and now one of the most iconic expedition yachts ever refitted
- Proven global cruising pedigree, with voyages spanning Antarctica, the Arctic Circle, South Pacific, Mediterranean, and beyond
- A variety of 7 tenders, the largest tender selection of any charter yacht, including a 10m Riva, a 13m Custom tender, 14m Endeavour 42, 12m Donzi ZXFO, SEADOO Challenger, Brigg 55, Vanguard DR760 plus multiple expedition landing craft, and a full arsenal of toys to support every on-water pursuit.
- Immersive 4D private cinema for next-level entertainment at sea — a guest favourite after long days of exploring
- Onboard wellness facilities including massage facilities and gym, perfect for post-adventure relaxation
- Adjustable-depth pool and Jacuzzi for all-season use — these transformable features allow for safe shallow lounging, child-friendly swimming, dive training sessions, or complete deck integration for seamless entertaining and event layouts.
- Extensive toy inventory including multiple tenders, dive center with scuba equipment, jet skis, kayaks, SUPs, snorkelling gear, inflatables, and ROV capabilities
- Helideck and submersible-compatible storage to support elevated expedition logistics and luxury access
- Expansive indoor and outdoor entertaining areas ideal for families, groups, or special celebrations in complete privacy
- Refined interiors with warm, sophisticated finishes and spacious guest suites — timeless luxury meets expedition grit
- Accommodates up to 12 guests across 7 beautifully appointed suites, with versatile configurations for all group types
- Long-standing, loyal crew, many of whom have been with the yacht for longer than a decade, renowned for five-star service, expedition knowledge, and flawless attention to detail
- Built for adventure, tailored for comfort — ARCTIC is not just a yacht, she's a floating legacy.





MONKEY ISLAND





MONKEY ISLAND



MONKEY ISLAND



MONKEY ISLAND



OFFICE





BOAT DECK AFT



BOAT DECK AFT



LIBRARY



LIBRARY





GAMES ROOM



GAMES ROOM





MASTER SUITE





MASTER SUITE





MASTER SUITE





HER ENSUITE



HER ENSUITE



HIS ENSUITE





HIS DRESSING ROOM



MASTER SUITE



HELI DECK



SUN/HELI DECK





SUN/HELI DECK



SUN/HELI DECK



DIVING PLATFORM





BEACH HOUSE





BEACH HOUSE
Hydraulic, extendable dining table





BEACH HOUSE



BEACH HOUSE





BEACH HOUSE



BEACH HOUSE





BEACH HOUSE

Hydraulic, depth-adjustable pool & jacuzzi





BEACH HOUSE
Hydraulic, extendable dining table





BEACH HOUSE



BEACH HOUSE



BEACH HOUSE



BEACH HOUSE



SWIM PLATFORM



DINING ROOM



UPPER DECK AFT



UPPER DECK AFT



UPPER DECK AFT





CINEMA



OPEN
MIC
NIGHT



CINEMA



SITTING ROOM



SITTING ROOM



SITTING ROOM





SITTING ROOM





GUEST CABIN 1



GUEST CABIN 2



GUEST CABIN 3





GUEST CABIN 4



GUEST CABIN 4





GUEST CABIN 5



GUEST CABIN 6 - VIP





GUEST CABIN 6 - VIP



GUEST CABIN ENSUITE



GUEST CABIN ENSUITE





GYM





GYM



TOY ROOM & DIVE CENTRE





VOYAGER

VOYAGER

Routine

TOY ROOM & DIVE CENTRE



ARCTIC & TENDERS



YOGA/PILATES



WAKEBOARD





WATERTOYS



WATERTOYS



ARCTIC

JET SKIS





WATERTOYS & TENDERS



JET SKIS



GOLF



TOWABLES



DIVING



RIVA TENDER



FISHING TENDER



ENDEAVOUR 42 TENDER



TENDERS





SPECIFICATIONS

DIMENSIONS

Length	87.58m (287 ft)
Draft	7.2m
Beam	14.34m

PROFILE

Build / Refit	1994 / 2025
Flag	Bahamas
Registry Port	Nassau
Capacity	12
Cabins	7
Crew	28
Gross Tonnage	2610
Builder	Schichau Unterweser AG

CABINS & LAYOUT

Master Suite	1 Master (own level, super king bed, his & her ensuites with shower & bath, lounge)
VIP Suite	1 VIP (super king bed, study & lounge, shower & bath in ensuite)
Guest Cabins	3 Super King Rooms (1 cabin has a bath & shower, 2 cabins have shower only)
Twin Cabins	2 twin single cabins (both have shower only in ensuite)



TOYS & AMMENITIES

Tenders

- **Custom Tender**
 - Length: 12.68m
 - Beam: 3.40m
 - Draft: 0.60m
 - Engines: 2 Yanmar 6CXM-GTE2. 305Kw – 408HP @ 2750RPM 6.12L/373.8cid =610Kw-815HP
 - Capacity: 14
- **Endeavour 42**
 - Length: 13.96m
 - Beam: 3.8m
 - Draft: 0.95m
 - Engines: 2 Yanmar 6LY3-ETP 321Kw - 436HP @ 3198RPM 5.83L/354.7cid =642Kw-872HP
 - Capacity: 12
- **DONZI ZFXO**
 - Length: 11.6m
 - Beam: 2.83m
 - Draft: 0.41m
 - Engines: 3 Mercury 300 Verado Outboards supercharged
 - 224Kw = 300HP @ 5800RPM
 - 2.6L/158.5cid=672Kw-900HP
 - Capacity: 12

Riva

- Length: 10m
- Beam: 2.8m
- Draft: 0.64m
- Engines: Yanmar 6LYA-STP
- 191Kw – 256Hp @ 3100RPM
- 5.1L/316cid=382kw-512HP
- Capacity: 12

SEADOO Challenger - 210 Challenger SE

- Length: 6.25m
- Beam: 2.59m
- Draft: 30.5m
- Engines: twin 1503 Rotax 4-Tec 255hp
- Capacity: 10

Brigg 55

- Length: 5.5m
- Inflatable semi rigid hull
- Capacity: 6

Vanguard DR760

- Length: 7.6m
- Beam: 2.86m
- Draft: 0.6m
- Engines: Honda 225 VTEC

Toys

Jet Ski's x 7

- 2 x 2021 Sea-Doo PWC SPARK TRIXX 2UP 65mb
- 5 x 2023 Sea Doo PWC GTI 170

Sea Kayak

- Cobra Explorer 2m / 2 pax

Windsurfer

- Starboard 60-70
- Sails: 5.7 Wave pro & 6.7 Free ride pro

Surfboards

- 1 x Manta Body board (51ve07)
- 1 x Manta Body board (Pro XT)
- 1 x Bic Sport Peter Pan Mal
- 1 x Bic Sport Gerard Dabbadie Mini Mal
- 1 x Bic Sport Gerard Dabbadie Mini Mal
- 1 x Bic Sport Gerard Dabbadie Thruster
- 1 x South Bay Board Co. - Hybrid Surfboard (6' Shortboard)
- 1 x South Bay Board Co. 9'6 Tortuga Hybrid Surfboard (Longboard)
- 1 x Manta Wing Foil Board 6' x 29" x 4 3/10"

Zodiac Milpro MK4 HD x 2

- Length: 5.3m
- Engines: Yamaha

Water Ski's / Wake Boards

- 1 x HO Sports HOT SHOT TRAINERS
- 1 x HO SPORTS-67" Ranger Combo Waterskis
- 1 x HYPERLITE-119 Rebel Youth Wakeboard Combo Package with Remix Boot
- 1 x HYPERLITE-140 Rebel Wakeboard Combo Package with Frequency Boot

Inflatables

- 1 x JOBE SHARK TRAINER TOWABLE 1P
- 1 x Jobe Sonar 4-Rider Towable
- 1 x Sunchill – MegaChill
- 1 x Sunchill – PartyChill

Paddleboards

- 2 x VOYAGER-10'6" Voyager Inflatable Stand-Up Paddleboard Package
- 2 x Starboard 2012 SUP AST SILVER CRUISER 12'0 x 32"

Seabobs

- 4 x Cayago AG, Seabob F5

Scuba Diving

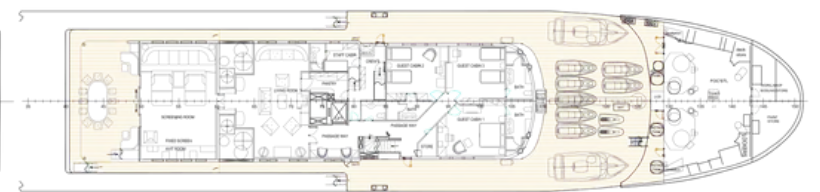
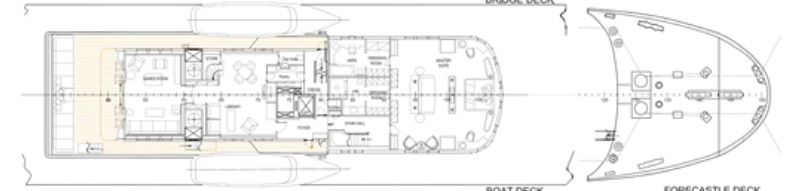
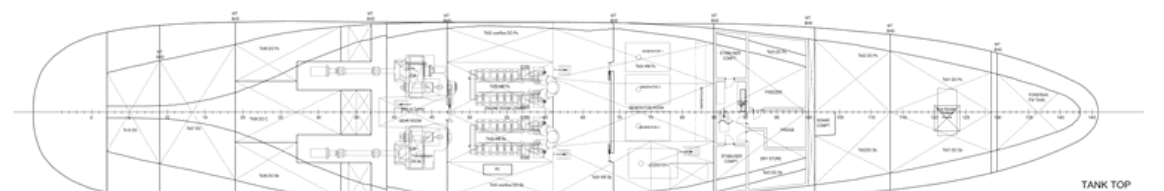
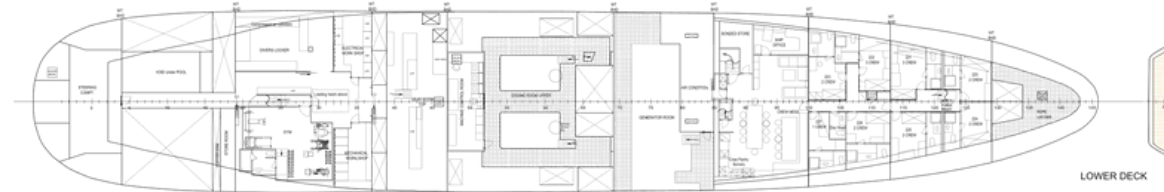
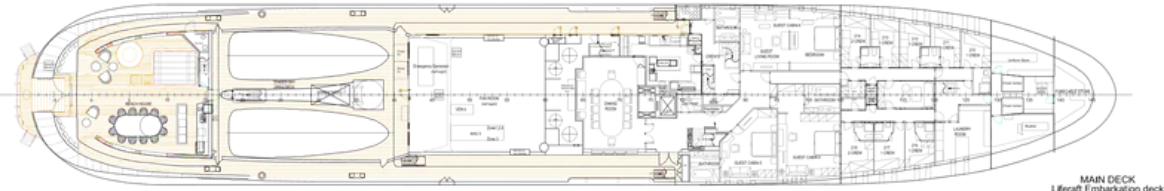
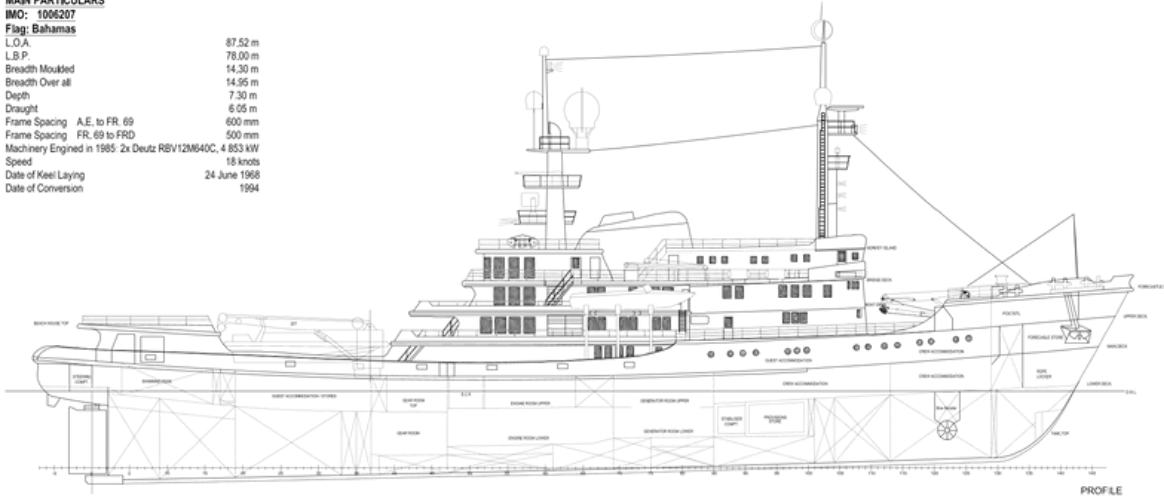
- 15 x SCUBAPRO 'GLIDE' bcd's (various sizes)
- 9 x SCUBAPRO MK25/G260 din regulator's w/alternate air source w/SPG & compass
- 15 x SCUBAPRO one dive computer's
- 15 x SCUBAPRO Caribbean wetsuits (various sizes)



MAIN PARTICULARS

IMO: 1065207
Flag: Bahamas
L.O.A.: 87.52 m
L.B.P.: 78.00 m
Breadth Moulded: 14.30 m
Breadth Over all: 14.95 m
Depth: 7.30 m
Draught: 6.05 m
Frame Spacing A.E. to FR. #9: 600 mm
Frame Spacing FR. #9 to FRD: 500 mm
Machinery Engine in 1985: 2x Deutz RBV12M640C, 4 853 kW
Speed: 18 knots
Date of Keel Laying: 24 June 1968
Date of Conversion: 1994

GENERAL ARRANGEMENT



0	Updated September 2023 General update to show latest General arrangement	CP	11/06/23	RAF
1	Updated July 2022 General update to show latest General arrangement	AC	11/07/22	RAF
2	Deck and space allocations updated as per latest request. Blue hatched detail added.	SPS	28/04/19	
Rev	Amendments	By	J. Cook	Appr

Status	Project	ARCTIC P		
FOR REVIEW	Title	GENERAL ARRANGEMENT		
Scale	1:150 A0			
Drawn	11/06/23	Checked	11/06/23	11/06/23
Approved at	M1382.100.00	Sheet	1 of 1	G

An aerial photograph of a large, dark blue and white expedition yacht named 'ARCTIC' docked in a tropical bay. The yacht features a complex superstructure with multiple masts and large satellite domes. The name 'ARCTIC' is visible on the side of the hull. The bay is surrounded by lush green hills and a clear blue sky. Two smaller white motorboats are moored alongside the yacht.

ARCTIC
88M EXPLORER YACHT

AHOY CLUB